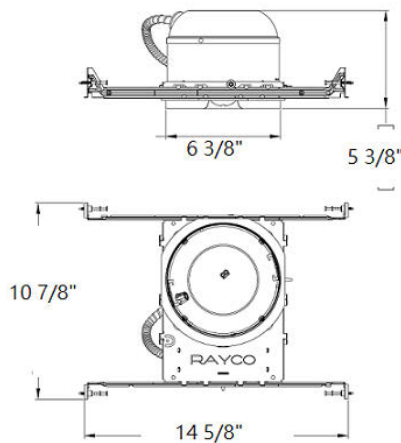
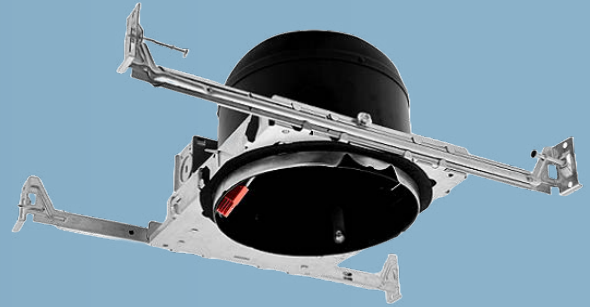


H6-ICAT-NC-SH

DESCRIPTION

The 6-inch shallow IC-rated new construction recessed can is a high-performance housing designed for tight ceiling spaces where insulation is present. IC (Insulation Contact) rated and UL listed for safety, this fixture allows direct contact with thermal insulation without risk of overheating. Its shallow profile makes it ideal for low-clearance ceilings, while its robust design ensures compatibility with a variety of LED trims. Engineered for new construction applications, it includes bar hangers for easy installation and is suitable for both residential and commercial use



FEATURES

- J-BOX is listed for through-branch circuit wiring(4in-4out).
- Maximum Of (4) No.12 AWG branch circuit conductors.
- Ceiling cut hole size: 6 3/8"
- Bar hangers can be positioned on either the long or short axis of the housing and locked in position on all sides at place with 24"

DIMMING

Compatible with most major brands of dimmers.

WARRANTY

5 years manufacturer warranty, consult factory for more details.

CONSTRUCTION

Pre-installed nails for easier installs in lumber and woods with extendable hanger bar

JUNCTION BOX

Quick wiring connectors included for easier wiring, no wiring nuts and electrical tap needed

LISTING

UL Listed. California Title24.

- SIZE: 14 5/8" L.x 10 7/8" W. x 5 3/8" H.
- 120v Input
- J-BOX is listed for through-branch circuit wiring.
- For ceiling installation only.
- IC & Airtight Rated Wet Location
- Can be completely covered by thermal insulation
- Unit can be installed onto a drop ceiling with T-bar grid in place
- UL listed , CA Title24 Compliant

